

**The St. Hugh RELICS invite you**  
**To support our fall 2020**  
***Online Catalog Fundraiser***

**By shopping and ordering**  
**October 9th – 21st**



**The following pages include a wide variety of**  
**handcrafted items and selected *treasures***  
**from our 2020 *Tea & Treasures* donations.**

**St. Hugh of Lincoln Episcopal Church**  
**36W957 Highland Ave. Elgin, IL**  
**[www.sthugh.net](http://www.sthugh.net)**

# ANIMALS, ANIMALS!



**0200 Kitten Family \$ 12.00**  
Set of Three



**0205 Stretchable Doxies \$ 10.00 ea.**  
Colors shown yellow, blue, or red \*\*



**0210 Flat Fleece Friends**  
Bunny – (white or blue) **\$ 3.00 ea.**  
Bear - **\$ 3.00**



**0215 Farm Friends**  
Pony **\$ 15.00** Cow **\$ 10.00**

\*\* indicates more colors may be available at pickup

## AND MORE ANIMALS . . .



### 0220 Sea Animals

Penguin **\$ 8.00** Walrus **\$ 15.00**  
Bear **\$ 5.00**



### 0230 Little Buddies

Owl **\$ 3.00** Bunny **\$ 8.00**  
Piglet **\$ 8.00**



0235 Holly Mouse/babies **\$ 20.00**  
Measures 16" tall



0240 Northwoods Moose **\$ 20.00**  
Measures 22" tall

## FOR BABIES AND TODDLERS



### 0300 Baby blankets

Multicolor & cap **\$ 25.00** White **\$ 20.00**



### 0305 Bunting and Bunny

Purple bunting **\$ 30.00** Bunny **\$ 5.00**



### 0310 Crib sheets & Critters

Cotton sheets **\$ 4.00 ea.**

Duck **\$ 3.00** Dog **\$ 5.00**



### 0315 Fleece Pillow & 2 extra cases

Purple princess or Bear set **\$ 10.00 ea.**

*Pillows are the perfect size for toddlers.*

## SWEATERS for YOUNGSTERS



**0400 Dainty girl's sweater**

Size 6 mos-1yr Machine wash/dry **\$ 25.00**



**0405 bright red with car buttons**

Size 18mos-2yrs Machine wash/dry **\$ 25.00**



**0410 Little Boy Blue Pullover**

Size 18mos-2yrs Machine wash/dry **\$ 25.00**



**0415 Irish Knit Navy Pullover \***

Size 1yr Machine wash/dry **\$ 25.00**

**\*Also available as this Navy Irish Knit Cardigan** Size 6mos – 1yr **\$ 25.00**



## More Adorable Sweaters ...



**0420 Hooded, Bulky Indoor/Outdoor**

Size 3-4 Gentle Wash/lay flat to dry **\$ 35.00**



**0425 Hooded for Indoor & Outdoor**

Size 3-4 Washable; lay flat to dry **\$ 35.00**



**0430 100% Wool Pullover**

Size 3 light outdoor wear **\$30.00**



**0435 Hobby Horse Pullover**

Size 3-4 Machine wash/dry **\$25.00**

## And a Few More . . .



**0440 Little Girl Hooded Sweater**

Size 4-5 Machine wash/dry **\$ 30.00**



**0445 Little Girl Pullover**

Size 12-18 mos. Machine wash/dry **\$ 25.00**



**0450 Cheerful Little Girl Sweater**

Size 2 Machine wash/dry **\$ 25.00**



**0455 Dainty Pink Button Front**

Size 2-3 Machine wash/dry **\$ 25.00**



**0460 Girls' Bobble Cardigan**

Size 4 Lightweight, Machine wash/dry **\$ 30.00**

## ACCESSORIES



**0500 Washable Scarves**

Green 50" X 7" **\$ 12.00**

Multi 60" X 5" **\$ 12.00**



**0505 Washable Scarves**

Green 52" **\$ 12.00**

Multi 52" **\$ 12.00**



**0510 with Sparkly accents**

Blue or Red **\$ 12.00 ea.**

Perfect for holiday wear!



**0515 Cowls**

Red or Multi **\$ 10.00 ea.**



**0520 Cowl**

100% Wool **\$ 15.00**



**0525 Ruffled Wool, Mohair & Angora Scarf**

Hand wash or dry clean **\$ 25.00**



**0530 Lacy Cowl \$ 15.00**



**0535 White Lace Cowl \$ 15.00**



**0540 Fabric Eye Glass Cases \$ 3.00 ea.**

Large -- (fits lg sunglasses) available in purple print only

Small -- In floral, dots, turquoise swirl, or red/purple diamond



**0545 Magnetic Faux Suede eye glass case**

Attaches to shirt with magnets

Colors: grey or brown **\$ 3.00 ea.**



**0550 Quilted 14" Tote bags with zipper close & pockets \$ 18.00 ea.**

Select by handle color: Blue, purple, black or brown

# For the KITCHEN



**0600 Apron \$12.00**



**0605 12oz Cups**  
Set of four **\$10.00**  
(From T&T donations)



**0610 Scarf Towels \$5.00 ea.**

Patterns: hearts / BBQ / Country



**0615 Leopard print Apron \$15.00**



**0620 Charcuterie board \$25.00**

Maple and Mahogany 19 x 9-3/4 x 3/4



**0625 Cutting Board \$25.00**

Walnut & Maple with rubber feet

Measures 16 x 9-3/4 x 3/4



**0630 Butcher Block Cutting Board**

Maple with rubber feet **\$40.00**

Measures 23-1/2 x 17-1/2 x 1-3/4

## More for the Kitchen . . .



### 0635 Microwave Bowl Pads Solid Colors - 2 sizes

Large 10" select red or blue **\$ 7.00 ea.**

Small 6" blue, green or yellow **\$ 5.00 ea.**



### 0640 Microwave Bowl Pads -- Set of 2

Each Set includes a 6" and a 10" pad **\$ 12.00**

Select Blue / paisley / taco / green & white \*\*



### 0645 Pizza Peel **\$ 45.00**

Walnut and Maple

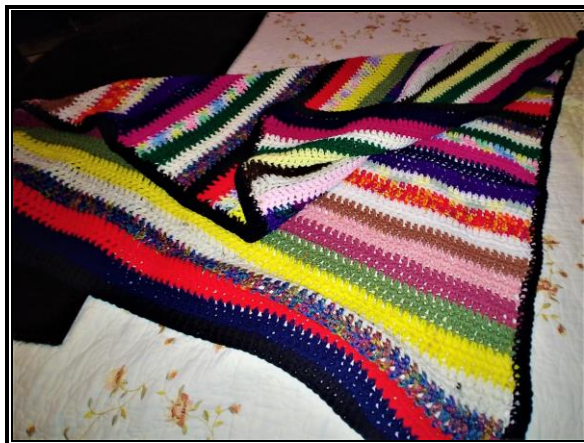
16 x 14-3/4 x 3/4 7" handle

\*\* More design options may be available on order pickup day.

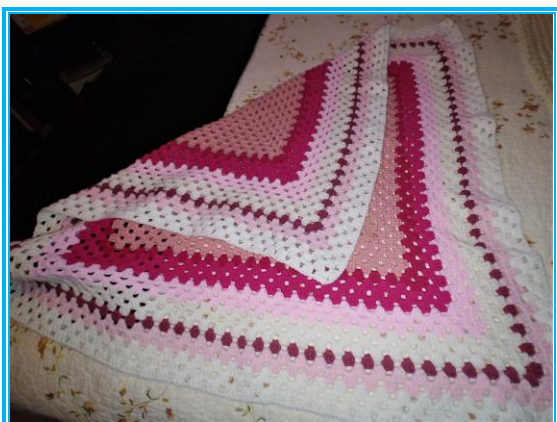
## For the Home



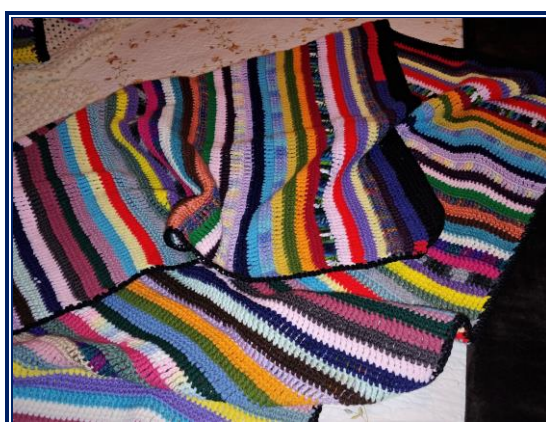
**0710 Granny Square Blanket \$ 40.00**  
large - 57" x 63" acrylic yarn



**0715 Striped Lap Blanket \$ 15.00**  
39" x 48" acrylic yarn



**0720 Pink and White Lap Blanket \$ 15.00**  
38" square acrylic yarn



**0725 Colorful Striped Blanket \$ 35.00**  
large - 53" x 60" acrylic yarn



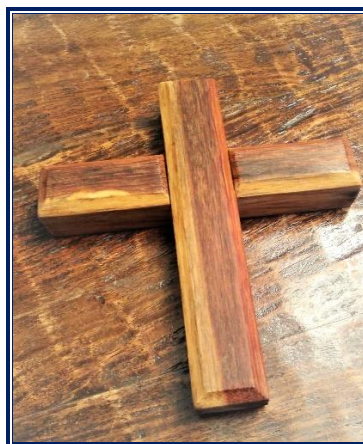
**0730 Blue, Green and Purple Lap Blanket \$ 10.00**  
26" x 37" acrylic yarn

## More Home Décor . . .



**0735 Teak Cross \$ 20.00**

16-1/2 x 10-1/4 x 7/8



**0740 Teak Cross \$ 10.00**

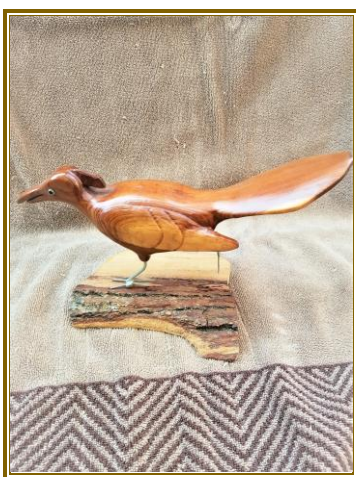
7 x 6 x 1-1/8



**\$ 30.00**



**0745 Wicker Storage Basket 23" X 13" X 21" with wrought iron handles/feet \*\***



**0750 Hand carved Bird from Basswood \*\***

13" long **\$ 15.00**



**0755 Lead Crystal Otter \*\***

6" tall **\$ 20.00**

**\*\* These items are from T&T donations**

## Seasonal Items



**0800 Snowman Throw & Pillow**  
Quilted 41" square Set **\$ 45.00**



**0805 Fuzzy Table Tree & Ornaments**  
24" Tall with 15 tiny vintage glass ornaments  
(from our T&T donations) **\$ 25.00**



**\$3.00 each**

**0810 Colorful Wine Bottle Gift Bags for the Holidays**

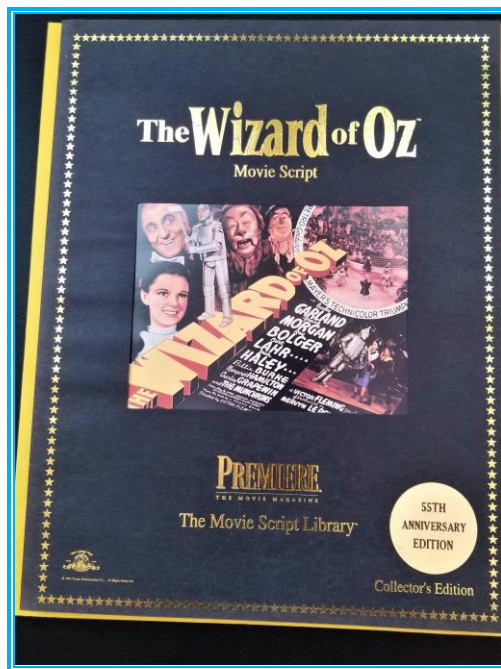
Select by band color: Orange / Pink / Salmon / magenta **OR** shimmery purple or green (above)



## A Few More . . .



**0815 Handmade Fabric Nativity**  
8 pieces **\$ 35.00**



**0820 Wizard of OZ Movie Script**  
**Collector's Edition \$ 15.00**  
(From our T&T donations)



**0825 Advent wreath base & candles** **\$ 13.00 per set**  
Extra box of four candles **\$ 5.00 per box**  
Wooden 2-piece base **\$ 10.00 per base**

## And the Final Items . . .



**0830 Knitted Seasonal Gnomes \*\***

9" gnome **\$ 12.00**

7" gnome (red or black) **\$ 8.00 ea.**



**0835 More Festive 9" Gnomes \*\***

Fleece (blue, red, black, or pink) **\$ 8.00 ea.**

Red knit hat gnome **\$ 10.00**



**0840 Retro 1950's Child's Sled \$ 40.00**

In its well-used condition – a bit of nostalgia!

(From our T&T donations)

**\*\* More of these items may be ordered in time for Christmas**

# How to Place Your Order

**Thank you** for selecting items from our online catalog! Now simply provide the following information in an email to **Linda Youngren @ [lindayoungren@sbcglobal.net](mailto:lindayoungren@sbcglobal.net)** who will contact you by phone if any item you selected is no longer available. She will email you an order confirmation and the total amount due when you pick up your items on October 24th.

*Please remember that all orders must be received by 5pm on Wednesday, October 21st and be picked up at St. Hugh on Saturday, October 24th between the hours of 10am and 2pm. Make your payment onsite to the St. Hugh RELICS either by check or credit card but no cash please.*

## E-Mail Your Order

In your email, include your **name, daytime/cell phone numbers** and the following information for **each catalog item**:

Catalog #

Description

Quantity (*for items where more than one is available*)

Color/pattern (*if applicable*)

Size (*if applicable*)

Price per item \$\$      Total for this catalog item number \$\$

**If you have questions on any catalog item, please contact one of the following women who will be happy to help you.**

---

Deanna Engelke	847-309-8782
Judy Mavros	847-464-1564
Joanne Clevenger	847-217-0774